

User's Manual LS-HM1-D

Dual Height Adjustable Stand

Before installation, visit our web site at <http://www.eizo.com> to confirm the applicable EIZO LCD monitor and the installation requirements of this stand.

Thank you very much for choosing the EIZO product.

Please read this User's Manual carefully to familiarize yourself with safe and effective usage procedures.

Please retain this manual for future reference.

[Location of the Caution Statements (Bottom)]



PRECAUTIONS

- To ensure personal safety and proper maintenance, please read this section and the caution statements on the unit.



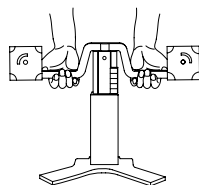
WARNING

- **Attach the applicable EIZO LCD monitors only.**
Not doing so may cause the stand or monitor to drop, which may result in injury or equipment damage.
- **Attach the two monitors.**
Attaching a monitor only may cause the stand to fall and result in injury or equipment damage.
- **Attach the LCD monitor securely to the stand.**
Install the monitor securely with using the enclosed screws in the stand package. Follow the instructions on the user's manual. Not doing so may cause the monitor to come unattached, which may result in injury or equipment damage.
- **Do not disassemble.**
The spring mechanism inside of the stand may result in injury or equipment damage when disassembling.

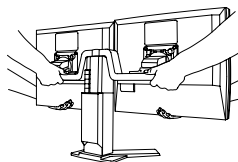


CAUTION

- **Carry the stand with holding the arm of the stand from underneath as shown in the below figures.**
Not doing so may result in the equipment damage.



Before attaching



Carry with another person after attaching.

- **Work with another person when attaching and adjusting height position.**
Not doing so may result in injury or equipment damage.
- **Be careful not to pinch a finger when adjusting height and horizontal position.**
- **When rotating the monitor for portrait display, make a space enough between a desk and a monitor not to pinch a finger.**
- **Do not adjust the height or the angle with gripping the *i*-Sound, optional speaker (if applicable).**
Adjusting the height or the angle with gripping the *i*-Sound is dangerous. It may result in injury or equipment damage.



Package Contents

Please contact your local dealer for assistance if any of the listed items are missing or damaged.

- Stand
- Stand Mounting Cover, 4 pcs
- Stoppers for height adjustment (attached to the stand, detachable), 5 pcs
- User's Manual
- Sheet (Compatible Screws List)
- Mounting Screws, 8 pcs each
(For the compatible screws and monitors, refer to the 'Compatible Screws List'.)

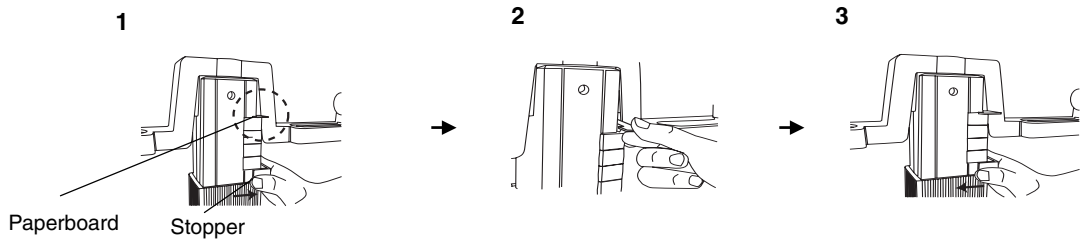
Note before Use

The paperboard is inserted on the stoppers of this stand for the protection of the stand in transport condition. Remove the paperboard before use. The procedures are as follows.

1. Detach the bottom one in five stoppers.
2. Slide down other four stoppers and remove the paperboard.
3. Reattach the detached stopper.

NOTE

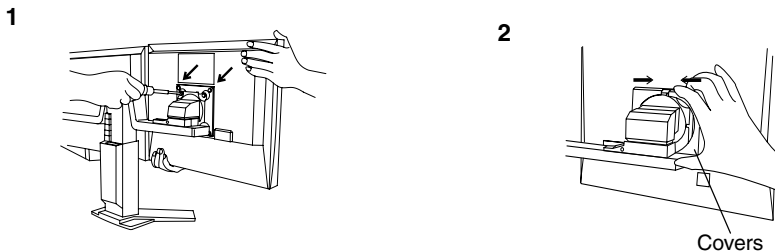
- When repacking and transporting the stand, reinsert the paperboard on the stoppers for the protection of the stand.



How to attach

Use specified screws for tightening up referring to the 'Compatible Screws List'.

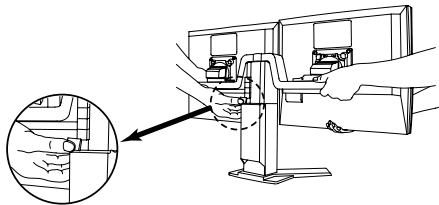
1. Position the monitor to fit the holes at the rear of the monitor to the shield plate of the stand. Tighten the two screws at the top as a temporary stop then tighten the rest of screws. (Tighten the two screws at the top securely after attaching all screws.)
2. Attach the covers to the shield plate with sliding them rightward or leftward.



How to adjust

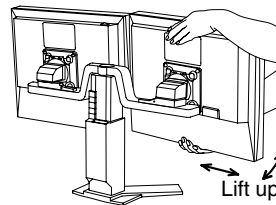
Height Adjustment

Adjust the height with using the stoppers.
 (Six stage height adjustable)
 Attach or remove the stopper from the bottom one by one with holding the arm of stand from underneath.



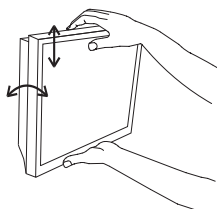
Horizontal Position Adjustment

Grip the top and bottom sides of the monitor firmly and slide it with lifting the bottom side of the monitor to the front.



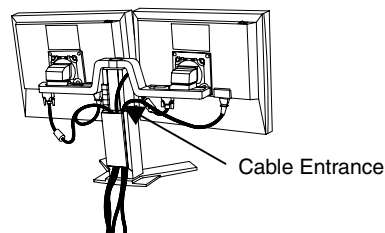
Angle Adjustment

Hold the monitor with both hands and adjust the monitor angle as desired.



Cable Connection

Connect the cables (ex. signal cable) to the monitor.
 After connecting, lead the cables into the cable holder.
 (The cables are recommended to lead with slight sag for the smooth motion of the stand when the height, horizontal position and angle adjustments.)

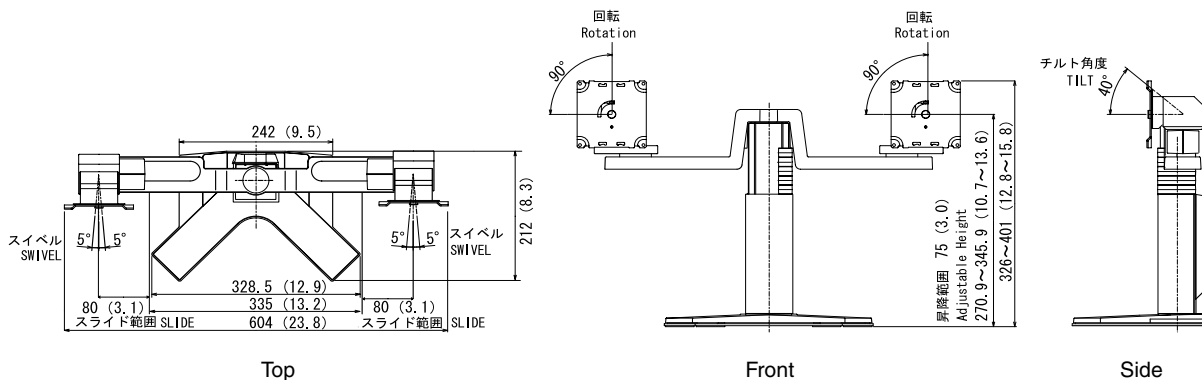


Specifications

Height Adjustment Range	75 mm (3.0") [Six stage height adjustment: bottom point, +15 (0.6"), +30 (1.2"), +45 (1.8"), +60 (2.4"), +75 (3.0") mm]
Dimensions	604 (W) x 326 to 401 (H) x 212 (D) mm (23.8" x 12.8" to 15.8" x 8.4")
Weight	6.8 kg (14.99 lbs.)

Dimensions

Unit: mm (inch)



LIMITED WARRANTY

EIZO NANA O CORPORATION (“EIZO”) authorized distributors warrant to the original purchaser that the product shall be free from defect in material and workmanship for a period of one (1) year from the date of purchase. The service parts stock for the product shall be maintained for five (5) years after the production is discontinued. This warranty is valid only in the countries where EIZO’s authorized distributors are located.

In the event of malfunction during the warranty period attributable directly to faulty material and/or workmanship, EIZO and EIZO’s authorized distributors will, at their option, either repair or replace the faulty product with the same or similar model. EIZO and EIZO’s authorized distributors shall have no obligation under this warranty, however, in the following cases:

- (a) Any defect caused by freight damage, modification, alteration, abuse, misuse, accident, incorrect installation, disaster, faulty maintenance or improper repair by third party other than EIZO and EIZO’s authorized distributors.
- (b) Any deformation, discoloration, warping, or whatsoever due to normal deterioration of the product.
- (c) Any incompatibility of the products with subsequent technical innovations or regulations.
- (d) Any defect of the product caused by external equipment.
- (e) Any defect of the product on which the original serial number has been altered or removed.
- (f) Any exchange of products due to the normal depletion of consumables such as batteries.

To obtain service under this warranty, the original purchaser must deliver the product, freight prepaid, in its original package or other adequate package affording an equal degree of protection, assuming the risk of damage and/or loss in transit, to your local EIZO authorized distributor. The original purchaser must present proof of purchase establishing the date of purchase of the product when requesting warranty service.

Warranty period for any replaced and/or repaired product under this warranty shall expire at the end of the original warranty period.

EIZO OR EIZO'S AUTHORIZED DISTRIBUTORS ARE NOT RESPONSIBLE FOR ANY DAMAGE TO, OR LOSS OF, DATA OR OTHER INFORMATION STORED IN ANY MEDIA OR ANY PART OF ANY PRODUCT RETURNED TO EIZO OR EIZO'S AUTHORIZED DISTRIBUTORS FOR REPAIR.

EIZO AND EIZO'S AUTHORIZED DISTRIBUTORS MAKE NO FURTHER WARRANTIES, EXPRESS OR IMPLIED, WITH RESPECT TO THE PRODUCT AND ITS QUALITY, PERFORMANCE, MERCHANTABILITY OR FITNESS FOR ANY PARTICULAR USE. IN NO EVENT SHALL EIZO OR EIZO'S AUTHORIZED DISTRIBUTORS BE LIABLE FOR ANY INCIDENTAL, INDIRECT, SPECIAL, CONSEQUENTIAL OR OTHER DAMAGES WHATSOEVER (INCLUDING, WITHOUT LIMITATION, DAMAGES FOR LOSS OF PROFIT, BUSINESS INTERRUPTION, LOSS OF BUSINESS INFORMATION, OR ANY OTHER PECUNIARY LOSS) ARISING OUT OF THE USE OR INABILITY TO USE THE PRODUCT OR IN ANY CONNECTION WITH THE PRODUCTS, WHETHER BASED ON CONTRACT, TORT, NEGLIGENCE, STRICT LIABILITY OR OTHERWISE, EVEN IF EIZO OR EIZO'S AUTHORIZED DISTRIBUTORS HAVE BEEN ADVISED OF THE POSSIBILITY OF SUCH DAMAGES. THIS EXCLUSION ALSO INCLUDES ANY LIABILITY WHICH MAY ARISE OUT OF THIRD PARTY CLAIMS AGAINST THE ORIGINAL PURCHASER. THE ESSENCE OF THE PROVISION IS TO LIMIT THE POTENTIAL LIABILITY OF EIZO AND EIZO'S AUTHORIZED DISTRIBUTORS ARISING OUT OF THIS LIMITED WARRANTY AND/OR SALES.